



These instructions and the images herein are proprietary. Any unauthorized reproduction is prohibited.

STOVE-STRUT-KIT-EARLY

Westfalia Stove Lid Strut
1980-1983 Vanagon Campers

This kit is over the top...the stovetop that is! You won't miss fooling around with your old stove prop after you install this kit that converts your clumsy prop rod into a gas energized strut system. Now you can open or close your stove with just one hand!

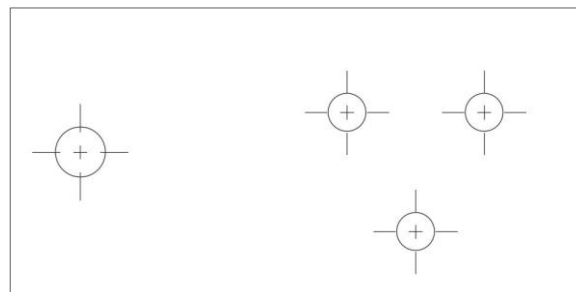
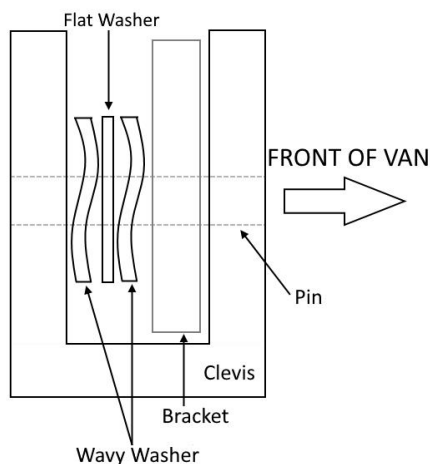
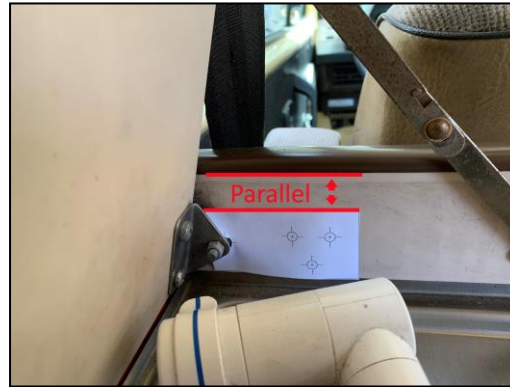
Note: Early vans will have a prop that screws into the wooden sink surround

| <ul style="list-style-type: none"> • Phillips Head Screwdriver • Flat Head Screwdriver or Pick • Drill • 1/16" Drill Bit • Center Punch • Scissors |
|--|

| Hardware |
|---|
| <ul style="list-style-type: none"> (1) Stove Lid Bracket (1) 10mm Ball Stud Mount (1) Gas Strut (1) Strut Clevis End (1) Strut Ball End (2) M6 Wavy Washer (1) M6 Flat Washer (5) Wood Screws |

INSTRUCTIONS:

- 1) Cut out the drilling template at the end of the page.
- 2) Align the single hole with the pivot bolt on your stove lid as shown to the right and mark the center locations for the three ball mount screws on the wooden stove cabinet. Make sure the rectangle is parallel with the sink top.
- 3) Use your marks to drill three pilot holes with a 1/16th drill bit. Be sure not to drill all the way through the cabinet! Attach the ball mount using 3 of the included wood screws.
- 4) Remove the old stove lid prop.
- 5) Install the stove lid bracket onto the stove lid using the original holes and included screws. Note that the ear on the bracket should be at the top of the bracket when installed.
- 6) Install the clevis end and the ball socket end onto the strut.
- 7) Attach the clevis end with the flat and wavy washers arranged as shown below between the bracket and the clevis as detailed below:



Close your lid and hit the road!