



These instructions and the images herein are proprietary. Any unauthorized reproduction is prohibited.

## STOVE-STRUT-KIT

Westfalia Stove Lid Strut  
1983-1991 Vanagon Campers

This kit is over the top...the stovetop that is! You won't miss fooling around with your old stove prop after you install this kit that converts your clumsy stove lid prop into a gas energized strut system. Now you can be open or close your stove with just one hand!

**Note: Late vans will have a prop that is riveted into the stainless steel sink surround.**

### Tools Needed

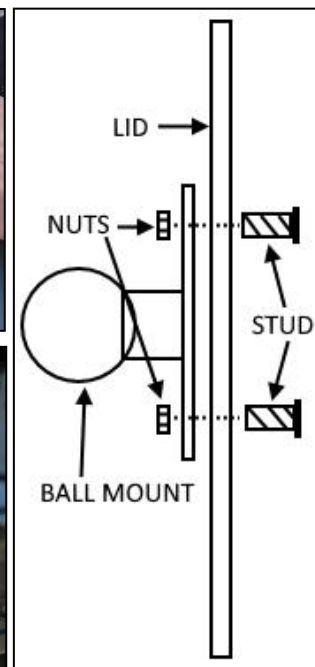
- Phillips Head Screwdriver
- Flat Head Screwdriver/Pick
- Drill
- 5/32" Drill Bit
- 1/8" Drill Bit
- Center Punch
- 7mm 1/4" Drive Socket
- 1/4" Extension
- 1/4" Ratchet
- Rubber Mallet
- 17mm Socket/Adjustable Wrench
- Tape Measure/Ruler
- Scissors

### Hardware List

- (1) Stove Lid Bracket
- (1) 10mm Ball Stud Mount
- (1) Gas Strut
- (1) Strut Clevis End
- (1) Strut Ball End
- (3) M4 PEM Studs
- (3) M4 Nuts
- (2) Sheet Metal Screws
- (2) Tinnerman Fasteners
- (2) M6 Wavy Washers

### Step by Step Instruction Format

- 1) Close the valve on your LP tank.
- 2) Cut out the include drill template on the last page. Measure 8 inches from the front of your stove lid and align the edge of the template with that measurement. Make sure the other edge is lined up with the bend on the lid. Tape the template to the stove lid and prop it open.
- 3) Use a center punch to mark the holes and drill them out with a 5/32" bit.
- 4) Install the (3) PEM studs into the stove lid by inserting them from the outside, running them through the ball stud mount, and into the M4 nuts as shown to the right. Tighten the nuts until the studs are fully seated into the stove lid.





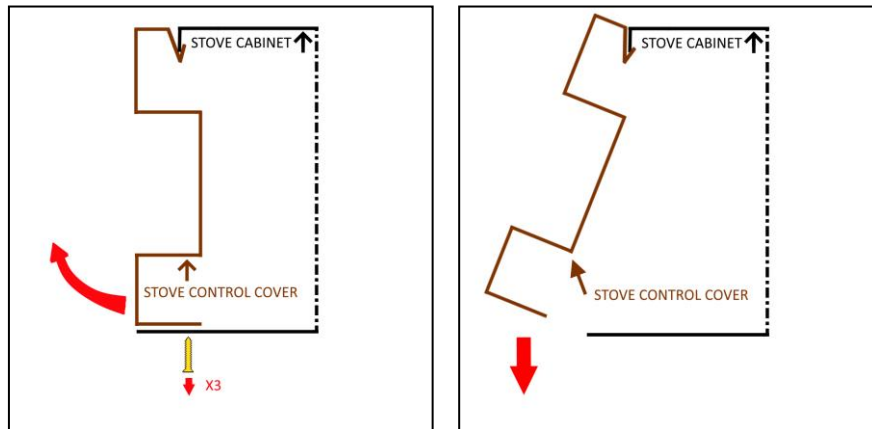
These instructions and the images herein are proprietary. Any unauthorized reproduction is prohibited.

## STOVE-STRUT-KIT

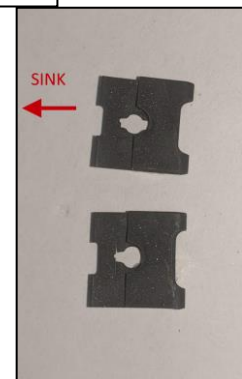
Westfalia Stove Lid Strut  
1983-1991 Vanagon Campers

- 5) Remove the burner control knobs from the stove by gently pulling them off, then remove the 17mm securing nut behind both knobs using either a socket or an adjustable wrench.
- 6) Remove the screws on either side of the stove control face plate and the three on the bottom. Then remove the control face plate by pushing down on the top of the cover. A few taps from a rubber mallet can help loosen the cover.

### SIDE VIEW OF STOVE FACEPLATE

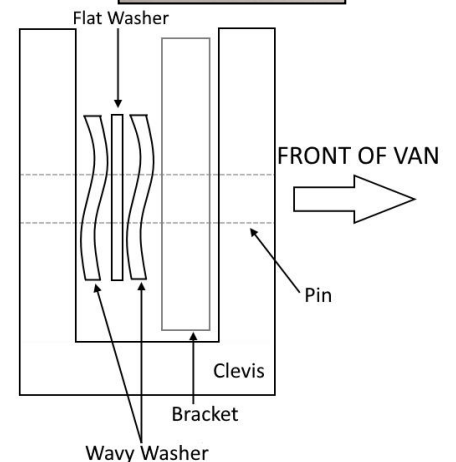


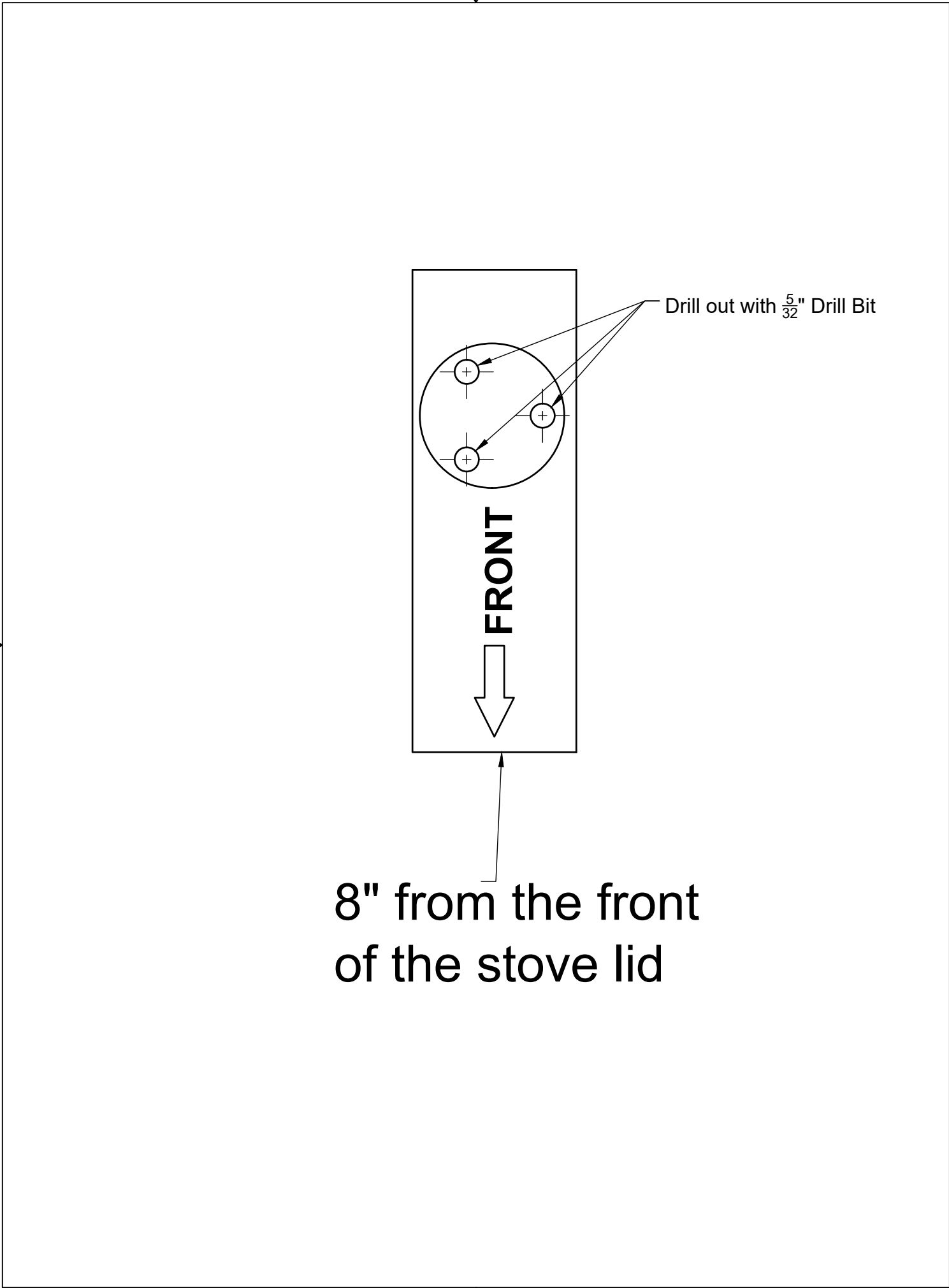
- 7) Remove the old stove lid prop by using a 1/8" bit to drill out the old rivets. A phillips head screwdriver can be used to remove the screws on the top of the prop.
- 8) Install the new stove top bracket using the countersunk screws while holding the Tinnerman fasteners from underneath the cooktop. The tab on the bracket should be closest to the sink. **\*Note: the Tinnerman fasteners need to be oriented as shown to properly secure the bracket.**
- 9) Attach the clevis end with the flat and wavy washers arranged as shown below between the bracket and the clevis as detailed to the right. **\*Note: Due to parts variance, some clevis ends will fit better with a single wavy washer.**



- 10) Screw the clevis end to the gas side of the strut, and the ball end to the rod end of the strut.
- 11) Install the gas strut onto both brackets and test it out!
- 12) With your stove lid fully strut powered, you can re-assemble your stove face by reversing steps 1-3.

**You're Done!**





Drill out with  $\frac{5}{32}$ " Drill Bit

**FRONT**

8" from the front of the stove lid