



These instructions and the images herein are proprietary. Any unauthorized reproduction is prohibited.




GVW-SKIDPLATE

Bolt-On Skid Plate to Replace Stock "Clamshell"

1986-1991 Vanagon, 2WD & SYNCRO

GoWesty's 1/8" steel skid plate is a bolt-on replacement for the stock spare tire carrier. It offers superior protection from nasty rocks and berms that campers love to get past traveling to our favorite campsites.

DISCLAIMER: This kit has been designed for easy installation. However, it does involve drilling into the factory crossmember. The installation of this kit is not within everyone's ability. Read through these instructions carefully and decide if installing it is for you. If not, please take your vehicle to an automotive professional.

Hardware List 	Tools Required 	Parts List 
(3) M8 Button Head Hex Bolts (3) M8 Thick Washers (3) M8 Clip-On Barrel Nuts (1) M12 Large Front Bolt (1) M12 Thick Washer (4) M6 Front Hex Bolt (4) M6 Front Wave Washer (4) M6 Front Washer	<ul style="list-style-type: none"> • Electric drill • 11/32" Drill Bits • 10mm, 13mm & 19mm Combination or Socket Wrench • Drift Punch or Drive Pin Punch • Hammer • 5mm Hex 	(1) Front Skid Plate (1) Barrel Nut Bar

Installation Note: It is recommended to leave all fasteners loose until everything is installed and fitted correctly. The final torque should be applied once everything is fitted properly.

Syncro & 2WD Installation Instructions





These instructions and the images herein are proprietary. Any unauthorized reproduction is prohibited.

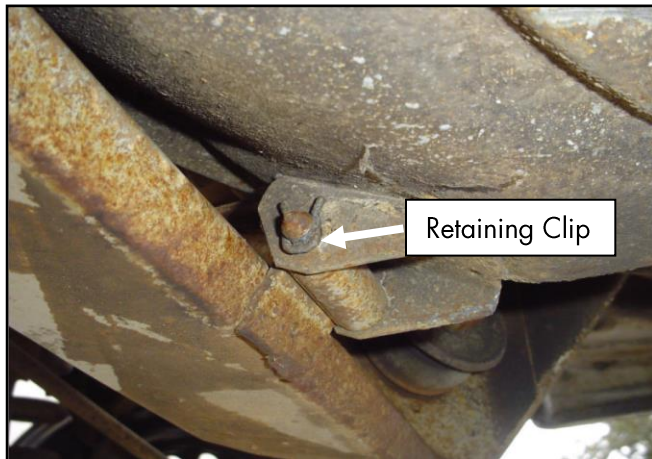
GVW-SKIDPLATE

Bolt-On Skid Plate to Replace Stock "Clamshell"
1986-1991 Vanagon, 2WD & SYNCRO

- 1) Open the spare tire carrier by removing the 19mm retaining bolt and releasing the catch hook that holds the tire carrier in place. The tire carrier will swing down to expose the spare tire. Remove the spare tire and close the spare tire carrier.



- 2) Next, remove the small retaining clips that hold the spare tire spring bars in place. Using a drift or drive pin punch, tap the ends of the spring bars out of the tire carrier, and remove the spare tire carrier from the vehicle. Rotate each of the retaining springs so that the front bent ends can be removed from the vehicle.



- 3) Once the clamshell and retaining springs have been removed, use your punch to remove the pin holding the carrier catch hook in place. Once the pin has been removed, the hook can be pulled out.



*Note: For Syncro installation, skip to **step eight on page four**; otherwise for 2WD installation continue to step four.*



These instructions and the images herein are proprietary. Any unauthorized reproduction is prohibited.

GVW-SKIDPLATE

Bolt-On Skid Plate to Replace Stock "Clamshell"
1986-1991 Vanagon, 2WD & SYNCRO

2WD Installation Steps

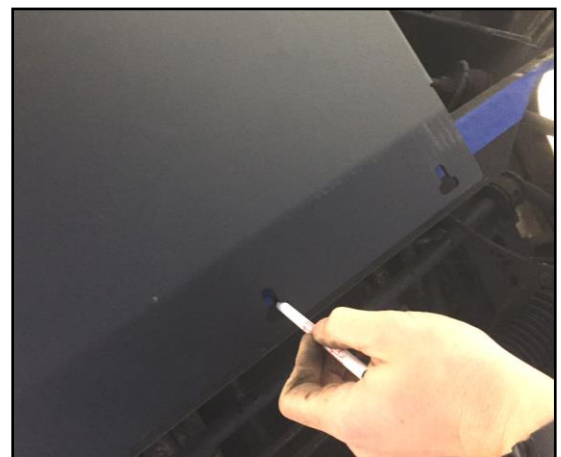
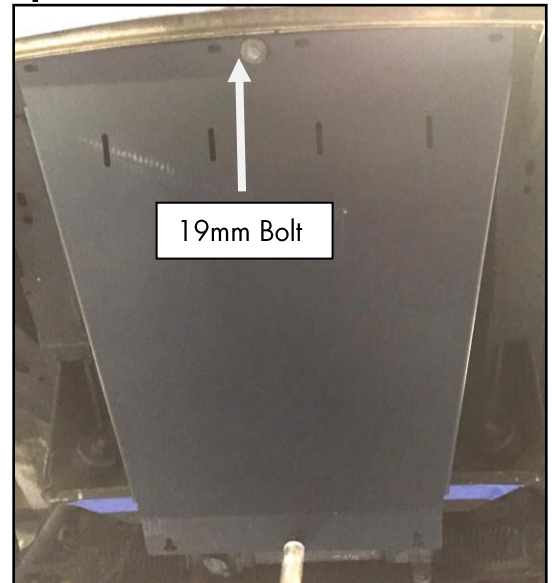
- 4) Hold the skid plate in position on the van and reinstall the 19mm bolt through the skid plate while supporting the back of the skid plate in place. Do not tighten the 19mm bolt completely.



Note: If there are threaded holes under your Vanagon that line up with the holes at the front of the skid plate, install all four M6 bolts and washers that are included in your skid plate kit. If there are not threaded holes, you can simply use the one 19mm bolt, or if you wish you can drill holes and install self-tapping screws or threaded rivets to help support the front of the skid plate. These bolts are very helpful for centering the plate to drill your rear holes.

- 5) While supporting the back of the skid plate centered on the vehicle cross member, mark the cross member where the slotted holes in the skid plate are located. Make sure the skid plate is centered and pushed forward as far as it can go. Look inside the cross member to verify that your hole location is reachable.

- 6) Remove the front bolts and skid plate to drill through the cross member at your marked hole location.





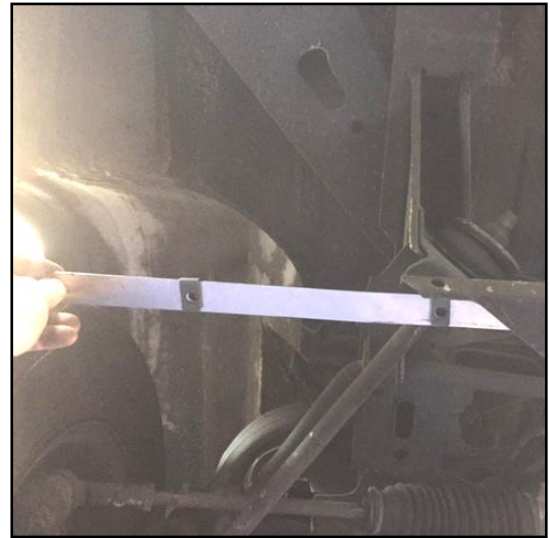
These instructions and the images herein are proprietary. Any unauthorized reproduction is prohibited.

GVW-SKIDPLATE

Bolt-On Skid Plate to Replace Stock "Clamshell"

1986-1991 Vanagon, 2WD & SYNCRO

- 7) Insert the threaded nut plate into one of the side openings of the cross member and line up your drilled holes. Lay the skid plate against the holes, and install the button-head screws through the skid plate, and into the cross member and the threaded nut plate.



Syncro & 2WD Installation Steps

- 8) Hold the skid plate in position on the van and reinstall the 19mm bolt through the skid plate while supporting the back of the skid plate in place. Install the 3 included 8mm socket head cap screws with the 8mm thick washers.



Note: If there are threaded holes under your Vanagon that line up with the holes at the front of the skid plate, install the bolts and washers that are included in your skid plate kit. If there are not threaded holes, you can simply use the one 19mm bolt, or if you wish you can drill holes and install self-tapping screws or threaded rivets to help support the front of the skid plate.

That's it—you're ready to brave the rocks and brambles!