



These instructions and the images herein are proprietary. Any unauthorized reproduction is prohibited.

Vanagon Power Window Relocation Kit

GVW-PW-REL

1986-1991 Vanagon Campers

The purpose of this kit is to rid the door panels of the unreliable stock power window switches and relocate them to the dashboard. This is **ONLY** for vehicles that **ALREADY HAVE** power windows and **WILL NOT** work for hand crank operating windows.

Tools Needed

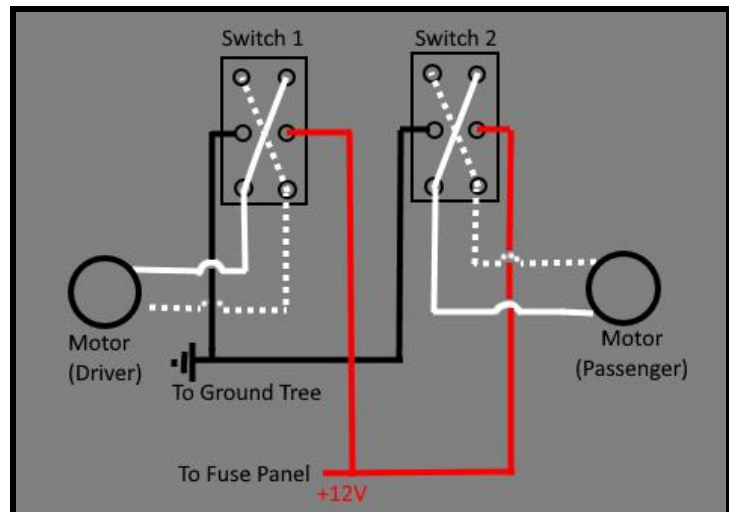
- 10mm Wrench or Socket
- Wire Strippers/Crimpers/Cutters
- Drill
- 1/8" Drill Bit
- 31/64" Drill Bit
- Mechanics Pick
- Tape Measure
- Trim Removal Tool
- Heat Gun/Lighter

DISCLAIMER: This kit has been designed for easy installation. The installation of this kit is **not within everyone's ability**. Read through these instructions carefully and decide if installing it is for you. If not, please take your vehicle to an automotive electrician. Wiring errors can be troublesome and hazardous.

Kit Contents

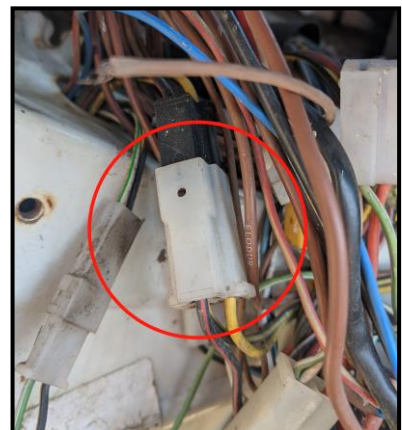
- (2) Window Switches+Covers
- (2) Black/Brown Cup Holder
- (8) Countersunk 5/8" Black Screws
- (8) Black Tinnerman Fastener
- (1) 8" Zip Tie
- (3) 4" Zip Ties
- (2) White Motor Wire
- (2) White/Black Motor Wire
- (2) Red Power Wire
- (2) Brown Ground Wire

Basic Wiring Diagram



Installing the Wiring

- 1) Plug the wiring harnesses into the switches as shown in the diagram above.
- 2) Roll up both front windows, then remove the negative lead from the starter battery and any auxiliary batteries that are installed.
- 3) Remove the door cards from both doors as described in Bentley 70.2.
- 4) With the door cards off, unplug the window switches from both doors.
- 5) Drop the fuse panel down and unplug the connector shown, noting the wire colors: BLACK w/ RED, BLACK w/ YELLOW, YELLOW.





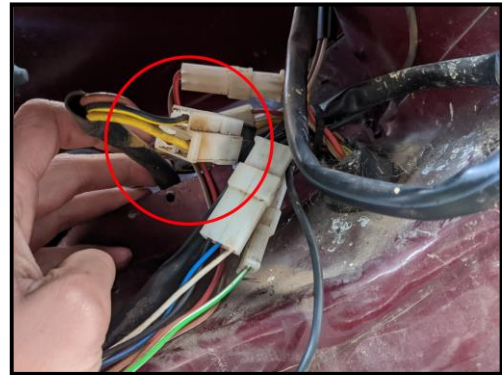
These instructions and the images herein are proprietary. Any unauthorized reproduction is prohibited.

Vanagon Power Window Relocation Kit

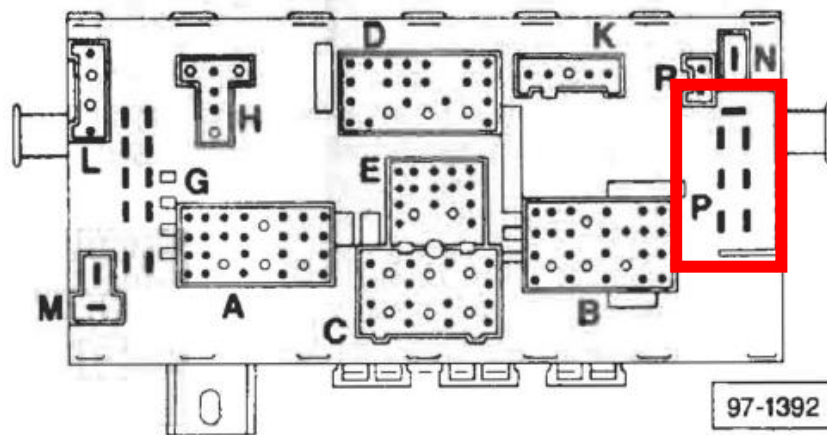
GVW-PW-REL

1986-1991 Vanagon Campers

- 6) Cut the connector off the body side of the harness. Attach the crimp connection ends of the WHITE and WHITE/BLACK wires to the body side of the harness and pull them through the door using the old harness.
- 7) Cut the connectors off the window motor. Then crimp the WHITE and WHITE/BLACK onto the motor wires and apply heat to activate the heat shrink. Polarity does not matter.
- 8) Plug the BROWN wire onto one of the ground trees behind the fuse box.
- 9) Remove the glovebox as described in Bentley 70.6 to access the passenger door wiring connections.
- 10) Unplug the passenger window harness pictured to the right, noting the wire colors: YELLOW, BLACK/YELLOW, BROWN.
- 11) Cut the connector off and pull the new harness through in the same manor as the drivers side.
- 12) Using the second wiring harness, route the crimp connector end of the WHITE and the WHITE/BLACK wires from body of the van into the door passengers door.
- 13) Cut the connectors off the window motor. Then crimp the WHITE and WHITE/BLACK onto the motor wires and apply heat to activate the heat shrink. Polarity does not matter.
- 14) Connect the brown wire to any open connections on the ground trees by the fuse panel.
- 15) Connect the red wires from both harnesses to open connections on the "P" terminal on the fuse box as indicated by the diagram below:



Note: If you only have one open "P" terminal, the power wires can be combined by crimping them both into a new spade connector.





These instructions and the images herein are proprietary. Any unauthorized reproduction is prohibited.

Vanagon Power Window Relocation Kit

GVW-PW-REL

1986-1991 Vanagon Campers

- 16) Reconnect your battery and test both switches for functionality. Note the operating direction of the switches, then mark the switches to indicate the correct mounting position. (Up is up, down is down!)

Mounting the Switches

- 1) Remove the plastic panel in front of the lower heater wells.
- 2) We recommend placing the switch outboard of the climate control vents. Measure the distance outboard from the vents on each side and mark the desired switch location as shown to the right.
- 3) Use the switch itself to find vertical center. The switch will be cradled behind this panel, so be sure to get the positioning true. Mark center with a center punch for pilot hole placement.
- 4) Drill a pilot hole with the 1/8" bit, then out to 31/64".
NOTE: The heater core is DIRECTLY behind this section of the dash, and there isn't very much space between it and the dash! BE SURE not to drill into the heater core!
- 5) Insert each switch from the backside of the dash. Verify that each switch is oriented correctly and tighten the lock rings down using pliers. With the lock rings secure, the rubber covers can be threaded on.
- 6) The switches left over in the door panels can be put aside, and the cup holders installed in their place. With the door panel off, mock the placement of the cup holders to best cover the remaining holes, and mark the placement of AT LEAST four mounting screw points. Using the provided speed clips and screws, attach the cup holder to the panel.
- 7) Once the cup holders are mounted up securely, the panels may be installed back onto the doors.
- 8) Reinstall the glovebox and any other interior trim panels.



That's it, you're done!