



**BUMPER-REAR-HITCH**  
Hitch Assembly for GoWesty  
Plate Steel Rear Bumper

---

## Installation Tips

---

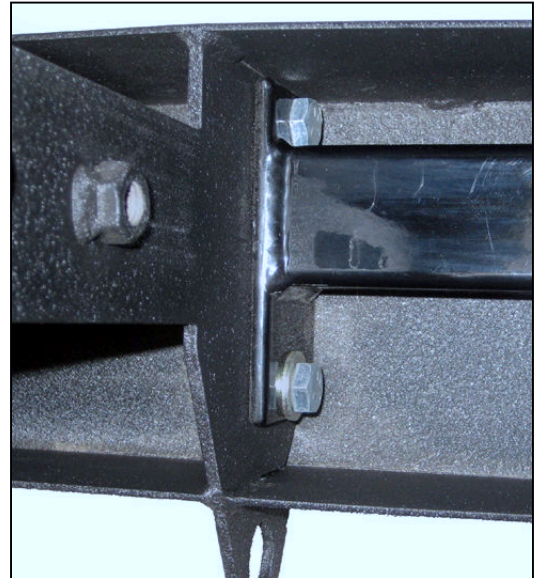
◆ Place the bumper face down on a soft surface so you don't mar the finish.

◆ Insert the hitch assembly down into place, seating the square of the hitch in the receiving hole in the bumper. You will likely need to persuade it into place with some blows from a soft-faced hammer. A wood block and a standard sledge work nicely, as well. Don't be shy with the hammer; this is designed to be a tight fit and tolerances are close.



◆ The 1/2" bolts for the crossbar mounting plates at either side should be inserted from the **inside out** so the heads of the bolts are on the hitch side. This is especially important at the top bolt, due to tight clearances.

- Upper holes: Insert the bolts through the holes and secure with a washer and nut. **These bolts DO NOT receive a washer on the head side, due to clearance issues.**
- Lower holes: Insert the bolt with a washer through the lower hole and secure with a washer and nut. These bolts **DO** receive washers on both sides.
- Get the bolts on one side started first, and then press down firmly or use the hammer on the other side to get *those* bolts started. Just a helpful tip!



◆ Once the 1/2" bolts are started, you can insert the lower 3/8" bolts with washers on both sides and the head of the bolt on the bottom, visible side.

- The 1/2" bolts should be tightened to approximately 70 ft-lbs. and the 3/8" bolts to approximately 30 ft-lbs.

◆ The bumper can now be installed per original instructions.

