

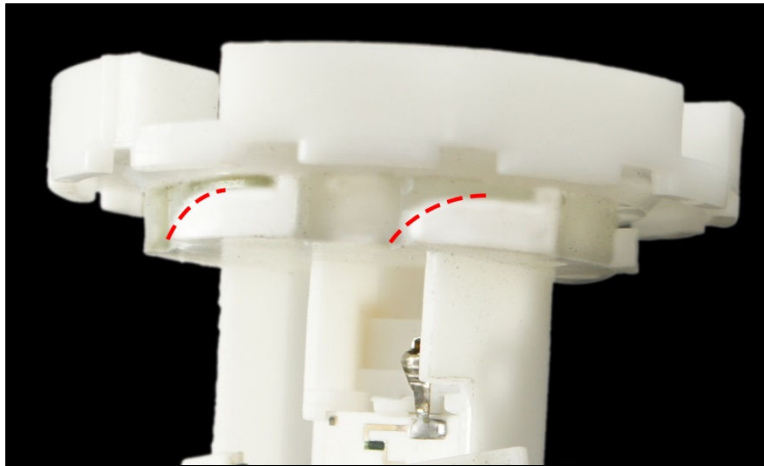


These instructions and the images herein are proprietary. Any unauthorized reproduction is prohibited.

251-919-051

## 2WD Fuel Level Sending Unit

The castings of the "ramps" that lock this sender into place on the tank are not as exact as the OE part. You might need to shave the ramps down a bit (a razor blade works well) to prevent the tank from digging in and gouging the ramps (see photo below). During installation, if you find that the sender stops rotating smoothly into place, stop and remove it. Inspect the ramps and trim away any areas where the plastic is gouged. Additionally, we strongly recommend lubing the O-ring with white grease (lithium). You must compress the O-ring tightly to clock the sending unit into correct position.



GoWesty Camper Products • 1119 Los Olivos Ave, Los Osos, CA 93402 • 888-469-3789 • [www.gowesty.com](http://www.gowesty.com)

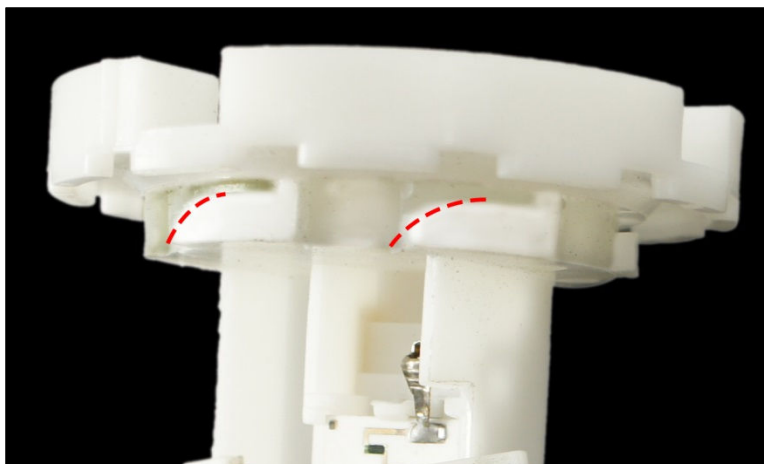


These instructions and the images herein are proprietary. Any unauthorized reproduction is prohibited.

251-919-051

## 2WD Fuel Level Sending Unit

The castings of the "ramps" that lock this sender into place on the tank are not as exact as the OE part. You might need to shave the ramps down a bit (a razor blade works well) to prevent the tank from digging in and gouging the ramps (see photo below). During installation, if you find that the sender stops rotating smoothly into place, stop and remove it. Inspect the ramps and trim away any areas where the plastic is gouged. Additionally, we strongly recommend lubing the O-ring with white grease (lithium). You must compress the O-ring tightly to clock the sending unit into correct position.



GoWesty Camper Products • 1119 Los Olivos Ave, Los Osos, CA 93402 • 888-469-3789 • [www.gowesty.com](http://www.gowesty.com)