



055-131-101K
Refrigerator Check Valve Update
Kit Vanagon, 1980 - 1991

Tools Needed :

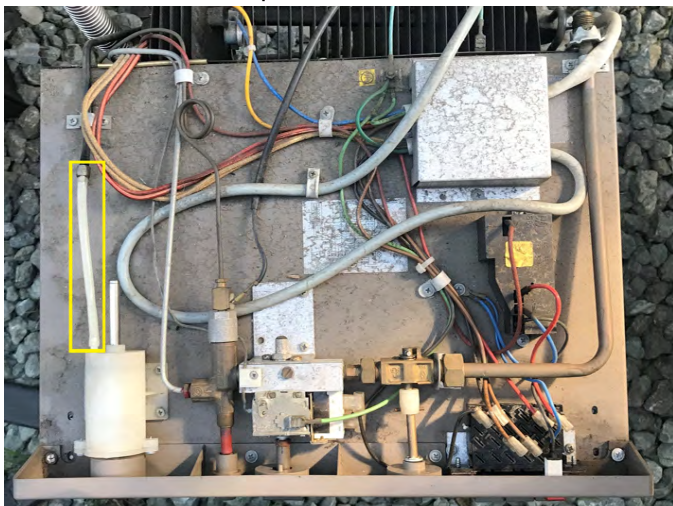
Phillips screwdriver	Flathead screwdriver
3/32" or 2.5mm drill bit	Bentley repair manual

Many of us have difficulty starting our 182b refrigerators on LP. Volkswagen released a service bulletin outlining the repair procedure for easier starting. This kit includes the updated check valve, o-ring and complete instructions for the job. The result is a richer air to fuel ratio for ignition. Installation requires removal & replacement of the entire fridge unit. Average install time 2hrs.

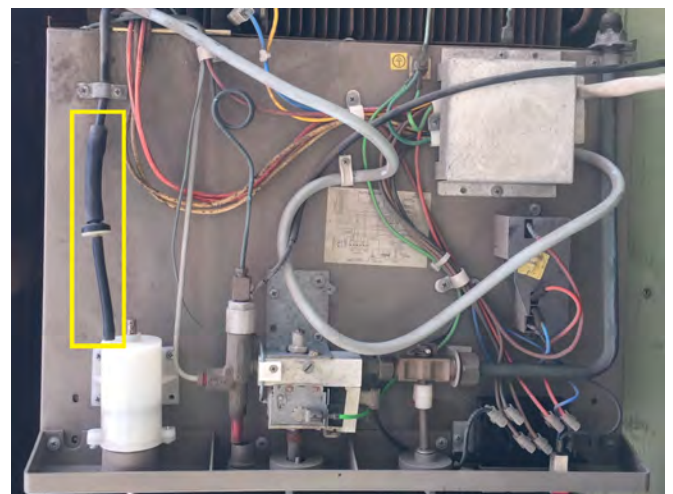
In order to service the pump, you must first remove the fridge (please reference the Go Westy video, or the Bentley Service Manual, page 76.24) **NOTE: While the fridge unit is out, carefully clean the entire backside of the fridge including the lower burner and exhaust vent. Inspect the auxiliary fan for broken blades and replace if necessary.*

Please reference the photos below to determine if these modifications have or have not already been made on your refrigerator. If your refrigerator has already received these modifications, but is still having trouble, check out the other Go Westy refrigeration products online.

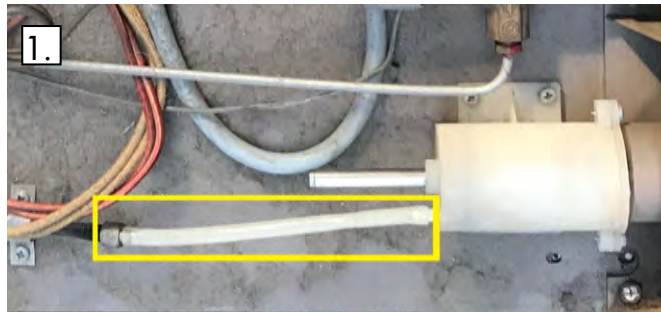
Requires Modification



Has Received Modification



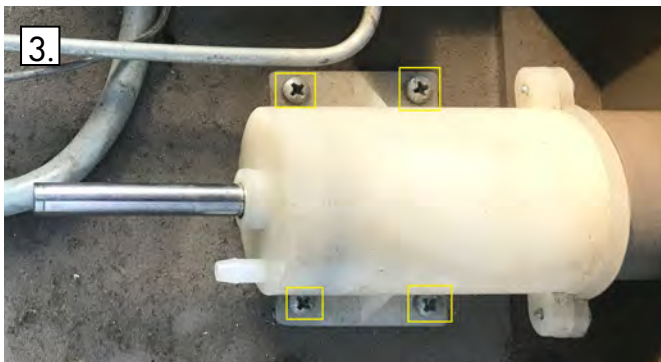
Refrigerator Air Supply Modification (Dometic 182 models)



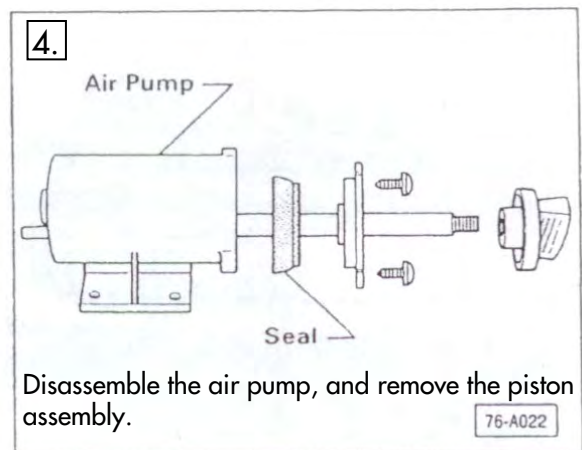
1. Remove the plastic air supply line



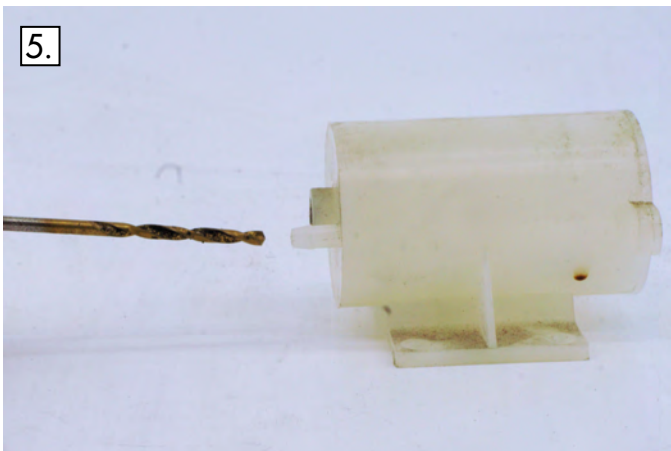
2. Remove the thumb screw and included ball valve insert



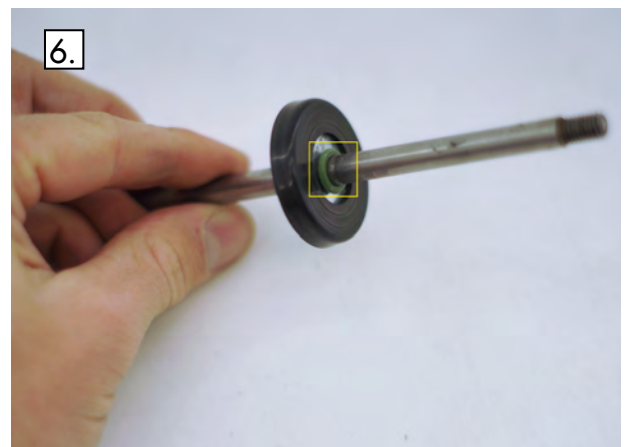
3. Remove the air pump assembly. This will require removing the knob and the four phillips head screws.



4. Disassemble the air pump, and remove the piston assembly.



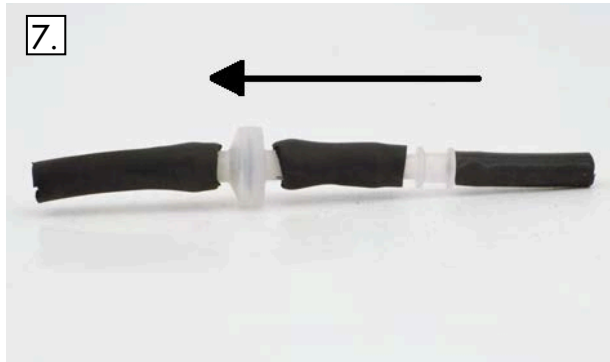
5. Drill out the outlet of the pump housing using a 3/32" or 2.5 mm drill bit



6. Remove the top snap-ring and plate on the piston assembly. Install the O-ring and reassemble the piston.



Refrigerator Air Supply Modification (Dometic 182 models)



Assemble the included check valve, tubing and adaptor. Verify that the cone portion of the check valve points away from the adaptor. Air will need to move in the direction indicated. If you are unsure, you can verify this by blowing into the tube.



Reinstall the pump, and insert the check valve assembly. Ensure the valve allows air out of the pump.

Reinstall your fridge, and you are done!

